

## SAFETY

The H2 recliner must be clear of any obstructions before use. This chair is designed for use by one adult at a time only.

This chair is not intended for use by persons (including children) with reduced physical, sensory or mental capabilities, or lack of experience and knowledge, unless they been given supervision or instruction concerning use of the are supervised or otherwise have been instructed on how to operate the chair by a person responsible for their safety

There are moving parts, which are driven by powerful actuators (motors), and care should be taken at all times.

Do not let children operate or play near the chair. Ensure children and pets are not in the chair's vicinity when any of the motorised functions of the chair are being utilized.

Do not sit on the footrest when it is open.

Do not sit on the back when it is lowered. Use only with the Power Transformer MC120 supplied with this chair.

NOTE: This chair is heavy and requires 2 people to lift.

## UPHOLSTERY CARE

Having knowledge of how to care for your furniture ensures longevity of your H2 product. To help you protect your investment, please follow the advice listed:

- Protect your furniture against direct sunlight.
- Do not place furniture too close to heat sources.
- Do not place the furniture in rooms with high humidity or outside.
- Dust and clean your furniture regularly.
- Remove liquid spills, stains, oil, cosmetics and other dirt immediately upon exposure.
- Avoid contact with chemicals such as paint, nail polish, alcohol cleaning gel and strong detergents.
- To keep your furniture looking good we recommend you to use a Leather Care product to properly clean your leather furniture 2-4 times a year. Pay particular attention to the seat, arms and head rest, where you experience the greatest amount of body contact. Body oils and creams may damage the leather.

*Additional advice and instructions can be found by visiting [h2seating.com](http://h2seating.com) or scan the QR Code*



H2 NORWAY AS  
Brevika Industriveg 63  
N-6018 Ålesund  
Norway

[h2seating.com](http://h2seating.com)

The H2 SEATING logo is positioned in the top right corner of the page, set against a background of a scenic mountain landscape with snow-capped peaks and a lake.

Crafted with  
Passion for Comfort – since 1941



**PowerLux Lift Chair**  
Operation and User Manual

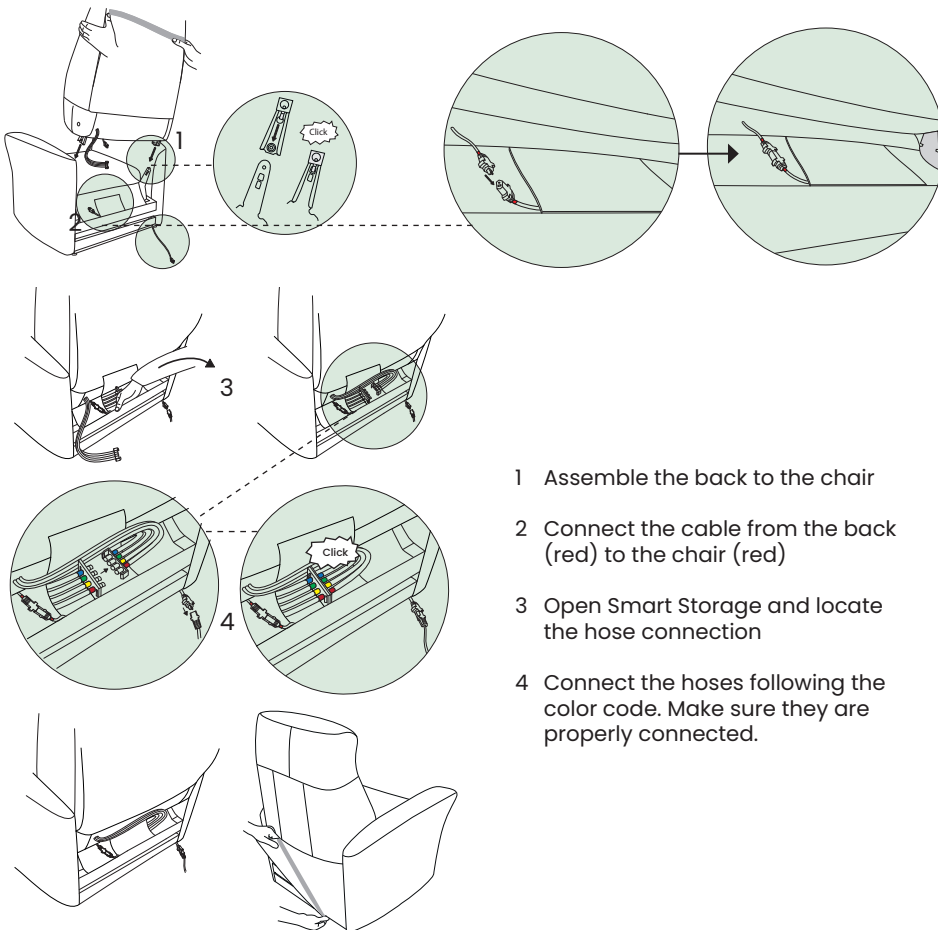
NORWEGIAN BRAND  


## CONGRATULATIONS ON YOUR PURCHASE OF A RECLINER FROM H2 SEATING

The chair is intended to be used in a domestic environment. If this chair has been purchased by a nursing home or other public or commercial enterprise, please establish whether electrical and other classifications are being met. Contact the seller of this chair or the manufacturer if this is not possible.

The chair is designed, as much as practically possible, to conform to the natural movement of an average person. It is not a medical device and professional advice must be taken if certain movements might aggravate a medical condition.

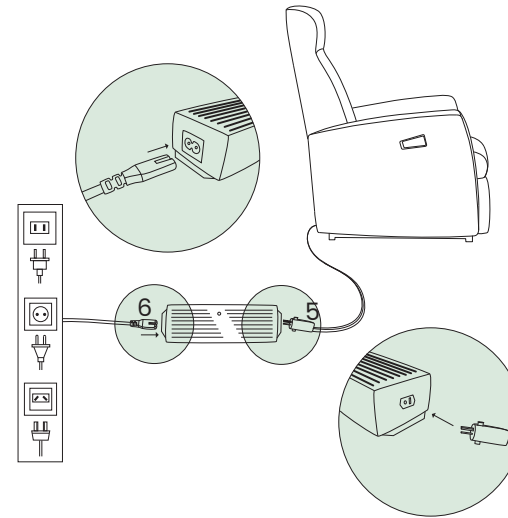
### TRANSFORMER CONNECTION



- 1 Assemble the back to the chair
- 2 Connect the cable from the back (red) to the chair (red)
- 3 Open Smart Storage and locate the hose connection
- 4 Connect the hoses following the color code. Make sure they are properly connected.

Ensure the chair is at least 15-20" away from the wall.

Turn the power on. Before using your H2 Lift Chair Recliner, please check that there is enough clearance from the wall by lowering the back fully.



- 5 Connect the transformer to the 2-pin plug
- 6 Insert the 2-pin plug into the power outlet on your wall
- 7 We recommend acquiring an **H2 Safe Battery Backup** to ensure smooth operation in the event of a power outage. *For more information, please inquire with your retailer.*



## PowerLux MULTI LIFT Chair

**PowerLux** has it all. Power recline and power operational headrest plus air massage, heating and individual adjustable dynamic lumbar support.

### HEAT ON/OFF

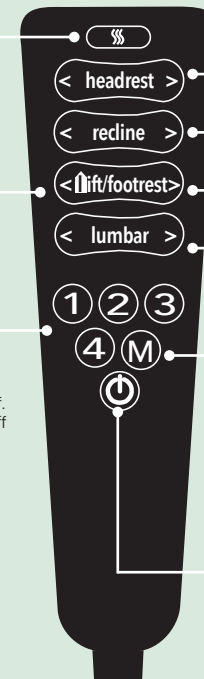
Heat will automatically turn off after 30 minutes.

### HOME/LIFT

Hold down the button to bring back and headrest to HOME position and LIFT you up.

### MASSAGE ZONES

Customize your massage by controlling which zones are activated. LEDs will signify which zones are currently on. If no zones are selected, then the massage will turn off. The massage unit will automatically turn off after 30 minutes.



### HEADREST CONTROL

Adjust the headrest angle.

### RECLINING CONTROL

Recline and change back angle

### FOOTREST

Raise the footrest

### LUMBAR SUPPORT

### MASSAGE MODES

Choose a massage mode by pushing the button. The LED signify which mode is activated. Modes include:



Pulse Wave Loop

### ON/OFF

This button controls the Air-Massage unit only

*Never let children play with the Handset. If the chair is likely to be unattended for any period of time, and children or people requiring special supervision have access to this chair, the transformer must be removed from the main power supply and stored in a secure place.*